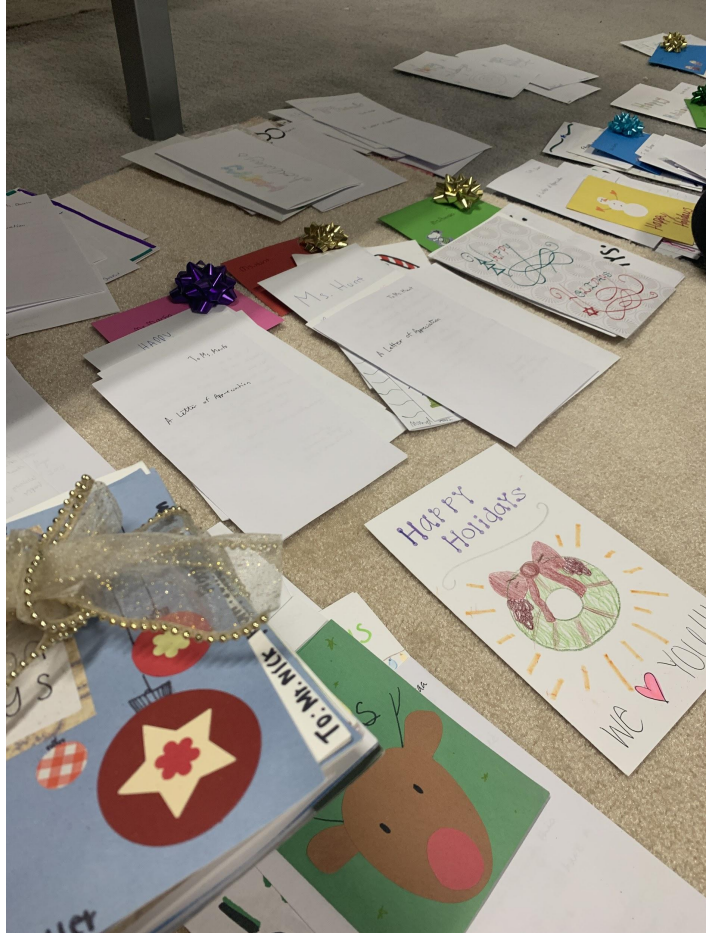
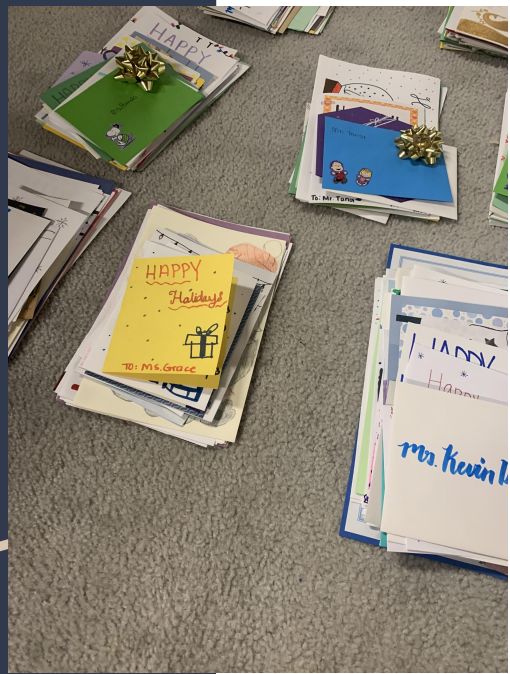
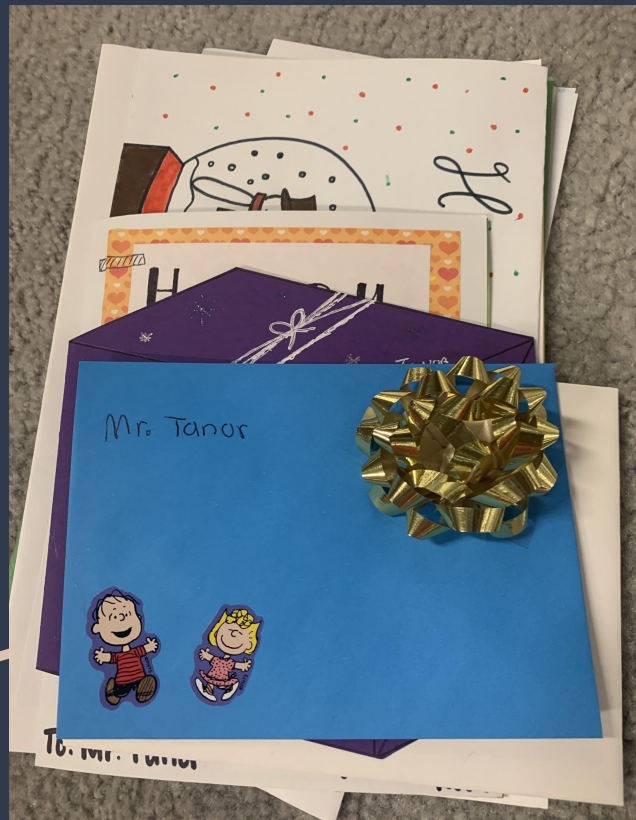


# NHS Meeting 1/4th

Sign in link: <https://forms.gle/fG937GwLELFhXSdP9>

# Our cards!



# Service Opportunities:

- **Columbia Community Care Association**
- **Freetown Farm**
- **ENGIN Volunteer**
  - **Weekly online speaking lessons to learn English**
- **Youth of the World Orchestra (YWO)**
  - **Service orchestra that plays virtually for community gatherings and senior homes**

# Atholton Food Drive

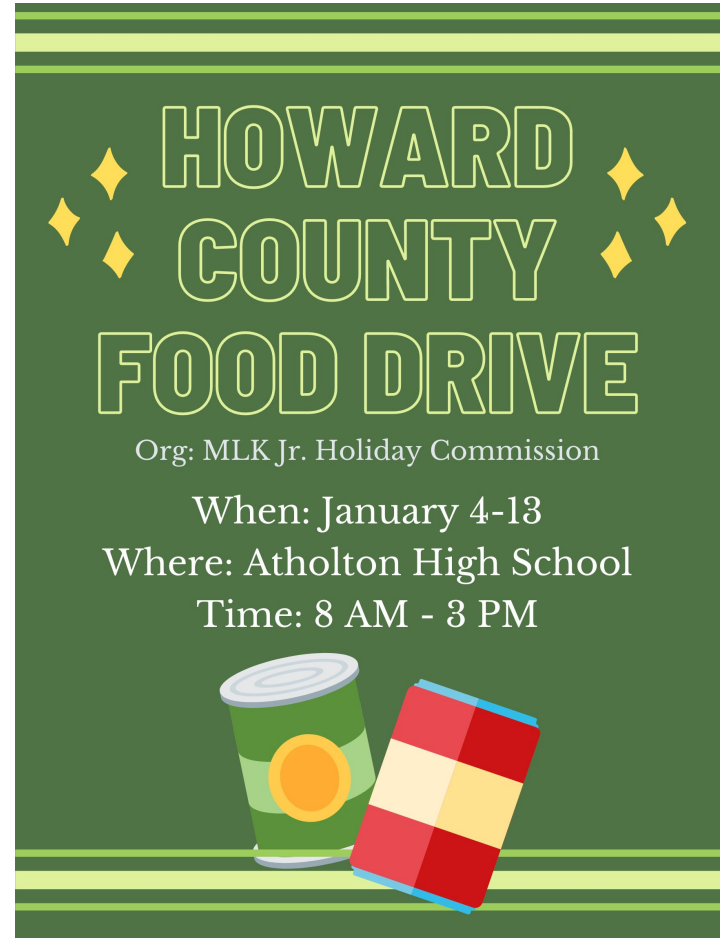
- NHS, PAC, and SGA are collaborating to compete in a food drive competition through the MLK Jr. Holiday Commission!
- The food drive will be from **January 4th to the 13th from 8 AM-3 PM.**
- Accepting any goods as long as they are not expired
- Boxes/Bags outside in front doors
- Will not be giving service hours, but we encourage everyone to participate
- Fliers!

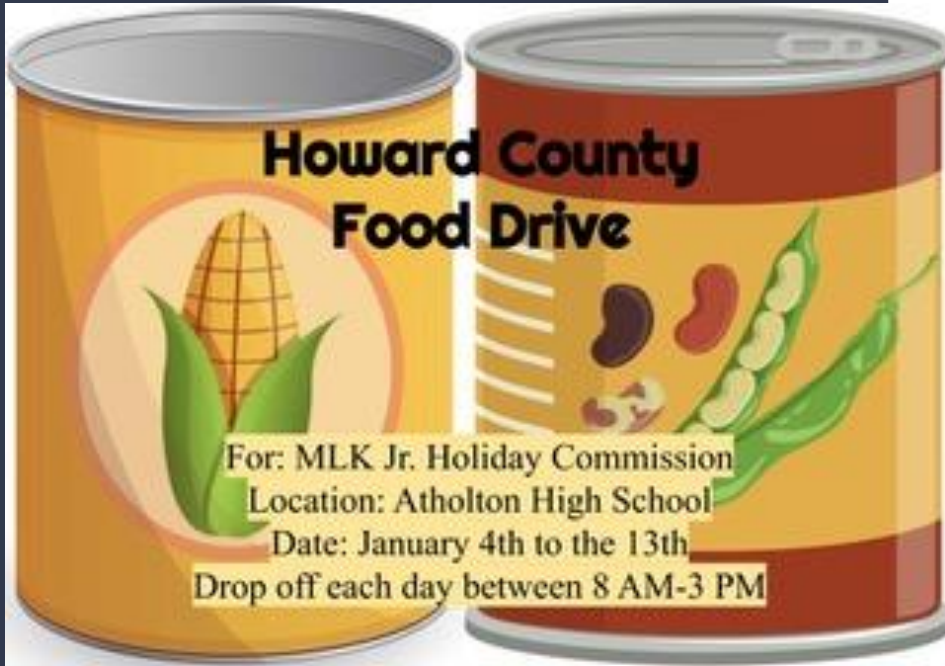
# Some fliers! (on website)

Made by Kathereen Osse



Made by Amanda Chin





By: Zachary Shord

# Howard County Food Drive

January 4-13 from 8AM-3PM

Where? - Atholton High School

**Through the MLK Jr. Holiday Commission we will be competing against other Howard County schools!**



**BE SURE TO HELP  
DONATE CANNED  
GOODS!**

Made by Colin Nguyen



# Online Hospital Cards!

- Sending to St. Jude's Children's Hospital, Colorado, and Nationwide Children's Hospital
- Click 'Send a Card to a Patient You Do Not Know'

Start off with:

1. Hey There
2. Hey you!
3. To: a very special person

Messages:

1. Stay strong
2. You are awesome
3. Never forget how amazing YOU are
4. You are an inspiration to us all!

DO NOT:

1. Include personal info (only your first name)
2. Include any religious statements like "I'm praying for you." or "God Bless"

<https://www.childrenscolorado.org/your-visit/cheer-cards/>

<https://www.stjude.org/get-involved/other-ways/online-card-message-patients.html>

<https://www.nationwidechildrens.org/greeting-card>